



TEC COMMUNITY

CSR REPORT 2025

Creating measurable social,
environmental, and wellness impact
across 11 countries and 29 cities

TABLE OF CONTENTS

INTRODUCTION

- 3 About Us
- 3 Our CSR Philosophy
- 3 Our Three CSR Pillars
- 4 Our Journey and Focus in 2025
- 4 Executive Summary
- 5 TEC Community CSR Progress
- 5 Impact by Pillar

PILLAR 1 – SOCIAL IMPACT

- 7 Focus Areas
- 7 Blood Donation – Giving the Gift of Life
- 9 Donation & Relief – Supporting Communities Across All TEC Cities
- 11 Illustrative Highlights
- 14 What We Learned

PILLAR 2 – ENVIRONMENTAL IMPACT

- 17 Focus Areas
- 18 Illustrative Highlights
- 19 What We Learned

PILLAR 3 – WELLNESS IMPACT

- 23 Focus Areas
- 23 Illustrative Highlights
- 25 What We Learned

GIVE BACK WITH EVERY CUP (GBWEC)

- 27 Signature Campaign – Give Back With Every Cup (GBWEC)

TEC COMMUNITY IMPACT AWARDS

- 31 City Champions by Pillar
- 31 Incredible Achievement – Mumbai
- 32 City Leadership Award 2025 – Chennai
- 34 Certificates of Appreciation

PARTNERS WE WORKED WITH

- 36 Social Impact Partners
- 37 Environmental Impact Partners
- 38 Wellness Impact Partners
- 39 Signature Campaign Partner – GBWEC

40 CONCLUSION

INTRODUCTION


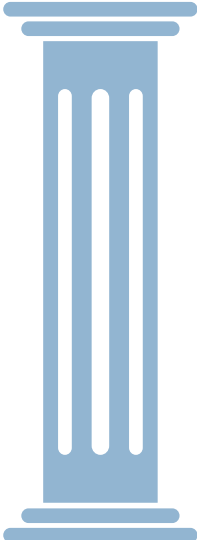
About Us

TEC provides flexible office solutions that help businesses thrive through well-designed workspaces and connected communities. Beyond the spaces themselves, we are committed to supporting the people, communities, and environments where we operate.

Our CSR Philosophy

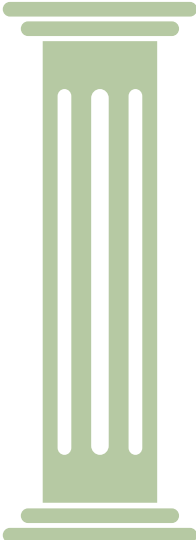
Corporate Social Responsibility (CSR) is central to TEC Community. It reflects our commitment to the wellbeing of our Members, to fostering inclusive and resilient communities, and to creating a sustainable future. Our approach is hyper-local—empowering Community Managers in each location to collaborate with non-profits, mobilise Members, and deliver measurable impact. This bottom-up model ensures our initiatives address real needs in each city while contributing to a global impact that we can track, learn from, and scale.

Our Three CSR Pillars


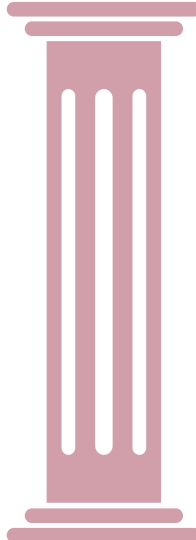
Social

Supporting inclusion, education, and community development, delivering measurable outcomes for those in need.

Environmental

Driving sustainable action through waste reduction, biodiversity initiatives, and awareness campaigns.

Wellness

Enhancing mental, physical, and preventive health through accessible programming.

Our Journey and Focus in 2025

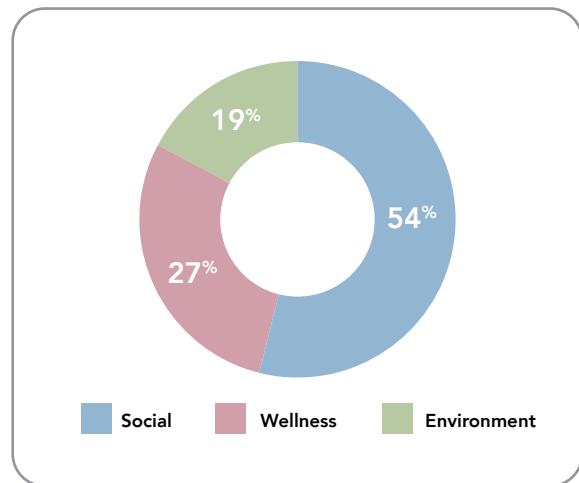
Building on previous years, 2025 centred on improving measurement, expanding participation, and strengthening collaboration across regions. Key priorities included:

- Establishing clear impact metrics across all pillars
- Developing scalable regional programmes and playbooks
- Increasing Member engagement and NGO collaboration
- Consistent storytelling and recognition for our Community Managers

Executive Summary

In 2025, TEC Community teams delivered 90 CSR activities across 11 countries and 29 cities, engaging approximately 5,727 Members and teammates and supporting 5,331 beneficiaries. Activities spanned our three pillars: Social (49 activities), Environmental (17), and Wellness (24), guided by strong local leadership from Community Managers and sustained partner collaboration across regions.

Metric	Total
CSR Activities	90
Countries / Cities	11 / 29
Participants (Members + Teammates)	5,727
Beneficiaries Supported	5,331
Funds Raised – GBWEC*	USD 10,000



Market contribution:

India accounted for 56 of the 90 activities and approximately 4,245 participants, highlighting the region's significant contribution and informing resource allocation for 2026.

* Give Back With Every Cup Campaign

TEC Community CSR Progress

2024 vs 2025

CSR Metric	2024	2025	Year-on-Year Change
Total CSR Activities	41	90	▲ 120%
CSR Participants (Members + Teammates)	2,875	5,727	▲ 99.2%
Beneficiaries Supported	4,000+	5,000+	▲ 20%
Charity Partners	40	50+	▲ 25%
Funds Raised (USD)	10,000+	11,000+	▲ 10%
Give Back With Every Cup – Drinks Sold	2,283	2,926	▲ 22%
Countries Engaged in CSR	~10	11	▲ 10%
Cities Engaged in CSR	~20	29	▲ 45%

Impact by Pillar

Pillar	Activities	Participants	Beneficiaries
Social	49	2,985	3,951
Environmental	17	1,442	—
Wellness	24	1,300	1,300

Top NGO Partners:

Goonj (India); Something Studio (Taiwan); Hridaya (India); Caritas Manila; Operation Smile (Ho Chi Minh City); Blue Dragon; Origami; Sankalp India Foundation



PILLAR 1:
SOCIAL IMPACT

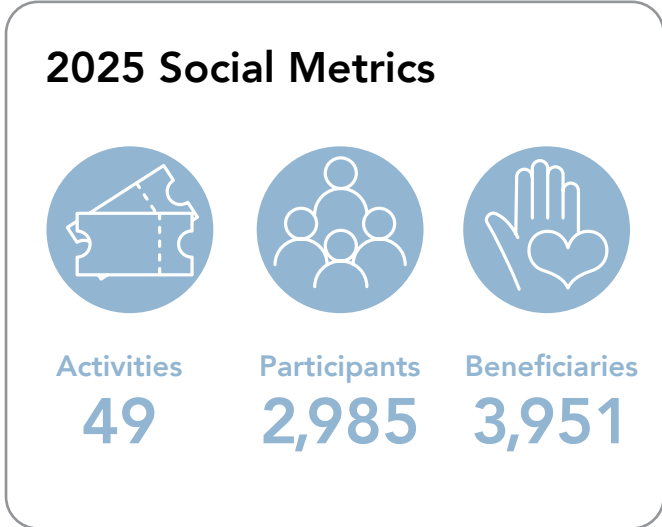
DONATION

DONATION

Focus Areas

In 2025, our Social initiatives delivered meaningful support to communities across our regions. We ran donation and relief programmes, providing food, clothing, toys, school supplies, and hygiene kits to vulnerable groups. Blood donation remained a key focus, with drives organised in collaboration with trusted medical partners.

Education, inclusion, and youth empowerment were central to our efforts. TEC Community supported learning, creative expression, and skill-building opportunities for young people. Our teams also hosted cultural and community events that fostered connection, awareness, and collaboration with local partners.



Blood Donation – Giving the Gift of Life



Blood donation was among our most impactful initiatives in 2025, with drives across Ho Chi Minh City, Hyderabad, Mumbai, Bangalore, Macau, New Delhi and Gurgaon. Partnering with organisations such as the Vietnam Red Cross, Sankalp India Foundation, and local hospital networks, TEC centres offered convenient donation points, making it easy for Members to participate.

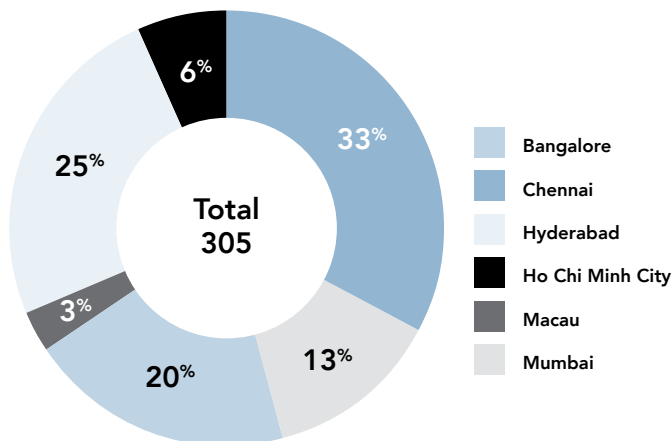
Each donation can support multiple patients, from children undergoing surgery to accident victims and individuals with chronic conditions. The strong participation across cities demonstrated the power of collective action and TEC’s commitment to supporting essential healthcare needs.



Blood Donation Participation by City 2025

City	# of Participants	Blood donated (L)	People Impacted
Chennai	100	45	300
Mumbai	40	18	120
Bangalore	60	27	180
Macau	10	4.5	30
Hyderabad	75	33.75	225
Ho Chi Minh City	20	9	60
Total	305	137.25	915

% of Total



Donation & Relief – Supporting Communities Across All TEC Cities

Donation and relief initiatives formed a cornerstone of TEC’s Social Impact work in 2025. Members and teams contributed essential items – including clothing, toys, school supplies, hygiene kits, food, and household goods – through collection points across TEC centres.

Working closely with local charities and community organisations ensured that donations reached

children, families, and vulnerable individuals where support was most needed.

From festive gift drives to education support packs, these initiatives strengthened connections between TEC Members and the communities around them.



City	Items donated	Unit	Qty	# of Participants	# of People Benefited
Abu Dhabi	Clothes, Books, Bedding Items etc	boxes	4	50	100
Bangalore	Toys & Children's Items	pieces	150	200	150
Bangalore	Clothes	boxes	4	20	20
Beijing	Books	kg	50	25	100
Chennai	Clothes	kg	55	40	100
New Delhi/Gurgaon	Food & Essentials	kg	250	100	45
New Delhi/Gurgaon	Food, Supplies, and Basic Care Items	boxes	45	300	100
Ho Chi Minh City	School & Learning Items	boxes	6	14	400
Hong Kong	Toys & Children's Items	pieces	58	20	58
Hyderabad	Health & Safety Items	pieces	150	150	230
Hyderabad	Toys & Children's Items, Clothes	boxes	4	25	150
Hyderabad	Toys & Children's Items	pieces	70	70	25
Macau	Toys & Children's Items, Milk, Money	pieces	50	10	70
Manila	School & Learning Items	boxes	4	40	100
Mumbai	Snack Boxes	pieces	400	60	20
Mumbai	Books, Stationery, Toys, Clothes, Bags etc	boxes	10	120	400
Pune	Food & Essentials	pieces	200	10	40
Singapore	Toys & Children's Items	boxes	15	15	170
Tianjin	Books	pieces	10	9	15

Reported Totals



92

Boxes



1,088

Pieces



355

Kilograms



1,278

Participants



2,293

People Benefitted

Illustrative Highlights

Macau – Cradle of Hope

TEC Community Macau partnered with Cradle of Hope to bring joy and comfort to children and teenagers living in residential care during the festive season. Members donated board games, toys, milk, and biscuits, creating a thoughtful festive surprise. On 17th December, donations were delivered in person, with each child receiving a small gift and a personal note. Beyond providing essentials, the initiative fostered a sense of connection, showing the positive impact when Members come together for a shared cause.



Vietnam – Blue Dragon: Back-to-School Support for Vulnerable Children

In Ho Chi Minh City, TEC partnered with the Blue Dragon Children’s Foundation to organise a Back-to-School Drive supporting children from disadvantaged communities.

Members contributed school supplies, backpacks, notebooks, stationery, and food, helping families prepare for the new school term. The initiative eased financial pressure for many households while

ensuring children had the materials they needed to return to school.

Blue Dragon also highlighted the initiative across its social media channels, helping amplify awareness of community-driven education support.



Bangalore – Toys & Children’s Items Donation Drive

In Bangalore, TEC Community supported children undergoing long-term treatment for thalassemia through a Toys and Children’s Items Donation Drive.

Members contributed educational toys, creative activity kits, storybooks, and small gifts designed

to bring comfort and joy to children spending long periods in hospital.

The drop-off collection format made it easy for Members to participate, resulting in a generous and colourful donation set that was later distributed to young patients through Sankalp India Foundation.



New Delhi and Gurgaon – Goonj Donation Drive

TEC Community New Delhi and Gurgaon partnered with Goonj to organise large-scale donation drives supporting underserved families. Collection points were set up across TEC centres, allowing Members to easily contribute clothing, footwear, and household essentials.

Volunteers also helped sort and pack the donated items to ensure they met Goonj’s quality standards before distribution. Through this collaborative effort, essential supplies were redistributed to communities in need while also promoting sustainability through the reuse and responsible circulation of goods.



Seoul – Home Restoration Support for Elderly Residents



TEC Community Seoul partnered with a local community organisation to support elderly individuals who are no longer able to maintain their homes safely or independently. The purpose of this initiative was to provide hands-on assistance with essential household repairs and cleaning, ensuring that vulnerable seniors could continue living in a safe, dignified, and comfortable environment.

Members joined the charity team in visiting the homes of elderly beneficiaries, where they helped clean, organise, and remove accumulated waste, addressing safety and hygiene challenges that had become unmanageable for the residents. The activity also included the expertise of a professional interior construction specialist, who repaired damaged walls, improved lighting, and carried out essential restoration work to significantly enhance the living conditions of the seniors.

A small but dedicated group of four TEC Members – including one child – volunteered their time, working together in the morning to complete the tasks with care and respect. Their participation underscored the impact that even a small group can make when acting with empathy and purpose.

Beyond the immediate improvements made in the homes, the initiative generated broader community value. Volunteers received official certificates of volunteer participation, enabling Member companies to include this activity in their own CSR reporting. This not only strengthened community awareness but also showcased how meaningful, localised volunteer projects can create real change in the lives of vulnerable individuals.



What We Learned

Members readily engage with simple, transparent giving mechanisms (drop-boxes, onsite drives) and health-linked causes (blood donation) with strong partner logistics. Data capture for in-kind units and currency conversion can be tightened for 2026.

Year-on-Year Change – Social

CSR Metric	2024	2025	Year-on-Year Change
Social activity volume	Several large drives	49 tracked initiatives	▲
Participants	2,875 (all CSR)	2,985 (Social alone)	▲ volume within pillar
Narrative	Curated marquee drives	Broader, hyper-local cadence	Shift
Geographic depth	—	India emerged as the strongest contributor	—

2025 marks a shift from low-volume campaigns in 2024 to high-volume, hyper-local social impact. Local teams initiated more drives independently, resulting in a broader and deeper social footprint across multiple cities.

City	Social Area(s) Participated In	City	Social Area(s) Participated In
Bangalore	Donation & relief (toys, education materials), support for children with thalassemia	Chennai	Community health awareness, Covid-19 education, essential needs support
Mumbai	Compassion outreach (cancer patient support), donation for vulnerable groups	Hyderabad	Hygiene kit donation, toy donation, community support
Pune	Education support for visually impaired girls (school supplies & essentials)	New Delhi & Gurgaon	Donation drives (clothes, essentials), animal welfare support, community visits
Hong Kong	Gift donation for underprivileged children	Macau	Seasonal donation (gifts & essentials for children in care)
Beijing	Book donation & educational support	Tianjin	Donation support for vulnerable populations

City	Social Area(s) Participated In	City	Social Area(s) Participated In
Xi'an	Community wellness education (social linked wellbeing initiative)	Shenzhen	Essential needs donation via handmade items
Jakarta	Blood donation (community health support)	Manila	Cultural giving (Christmas charity carols)
Singapore	Give Back With Every Cup – community support via charity beverages	Seoul	CSR booth supporting global health nonprofit
Ho Chi Minh City	Blood donation supporting citywide health services	Taipei	Adoption awareness & youth inclusion activities
Tokyo	Cultural and artistic community engagement	Sydney–Perth–Melbourne	Fundraising via charity morning tea
Abu Dhabi	Clothing & essentials donation (“Wall of Kindness”)	Dubai	Charity beverage initiative & community awareness

2026 Priorities (Social)

- Predefine in-kind units (kg, boxes, pieces) and establish FX conversion dates for cash donations to ensure a complete and comparable global USD view.
- Replicate “drop-box + onsite moment” formats in the Q3–Q4 calendar to align with peak giving periods.



PILLAR 2:
ENVIRONMENTAL
IMPACT

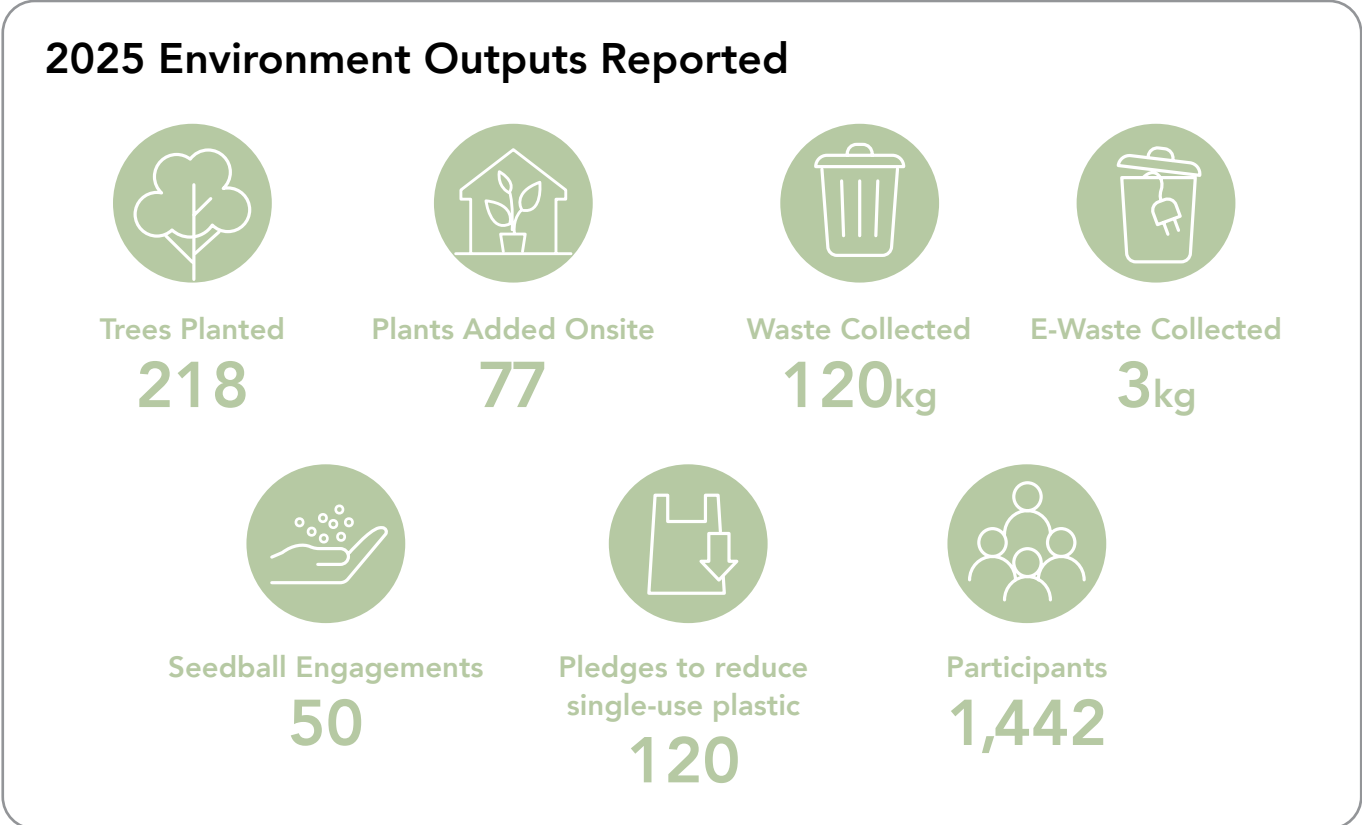
Focus Areas

In 2025, TEC Community strengthened its Environmental pillar through initiatives that combined practical action with education and awareness. Across multiple cities, teams organised tree-planting programmes, waste clean-ups, recycling initiatives, and sustainability workshops that encouraged Members to take part in protecting and restoring local environments.

These activities also created opportunities for collaboration with environmental NGOs and

local partners, helping translate awareness into tangible outcomes such as new trees planted, waste removed from natural areas, and increased understanding of responsible consumption.

By combining hands-on activities with learning opportunities, TEC Community aimed to inspire Members to adopt more sustainable habits both within the workplace and in their daily lives.



Illustrative Highlights

Chennai – Beach Clean-Up

TEC Community Chennai organised a beach clean-up activity that brought together 50 volunteers to remove plastic waste and debris from the shoreline. Participants collected approximately 120 kilograms of waste, helping restore a section of the coastline while also raising awareness about marine pollution.

The activity provided an opportunity for Members to contribute directly to environmental protection while learning about the environmental impact of plastic waste and the importance of reducing single-use plastics.



Vietnam – GAIA Nature Conservation: Forest Restoration & Environmental Protection

TEC Community Vietnam partnered with GAIA Nature Conservation to support forest restoration efforts in Ta Kou Nature Reserve. Through this collaboration, TEC funded and planted 100 native trees as part of GAIA's long-term reforestation programme.

The initiative contributes to biodiversity conservation and climate resilience while helping restore degraded forest areas. Participants also gained insight into the importance of preserving natural ecosystems and supporting long-term environmental initiatives.



Manila – Haribon Foundation: Environmental Conservation & Community Empowerment

TEC Community Manila collaborated with the Haribon Foundation, one of the Philippines’ leading environmental organisations, to support biodiversity protection and tree-planting initiatives.

Funds raised through the **Give Back With Every Cup (GBWEC)** campaign contributed USD 500 to Haribon’s programmes. These funds support tree-growing activities and broader conservation efforts aimed at restoring native forests and protecting wildlife habitats.

The initiative demonstrates how everyday actions within the TEC Community, such as purchasing drinks through GBWEC, can contribute directly to meaningful environmental impact.



What We Learned

Hands-on activities (cleanups, seedballs, desk gardening) spark participation; measurement templates (kg, #trees, #items upcycled) should be standardised pre-event to improve cross-city comparability in 2026.

Year-on-Year Change – Environmental

CSR Metric	2024	2025
Focus	Workshops & awareness	Action + metrics (trees, kg, pledges)
# of participants	200+ (select events)	1,442
Measurement	Narrative-led	Quantified outputs introduced
Regional engagement	—	India, Vietnam, Taipei, and Singapore delivered repeated environmental actions
Shift	Education-first	Action-first with measurable outputs

Narrative Insight

2025 represents a professionalisation of TEC’s Environmental pillar — shifting from creative, symbolic initiatives to measurable environmental outcomes, demonstrating maturity and data accountability.

Our Initiatives

City	Environmental Area(s) Participated In
Chennai	Beach clean-up (120 kg of waste collected), zero-waste workshops, and waste reduction initiatives (recycling, waste sorting, and e-waste).
Mumbai	Office green project (planting and indoor gardens). Recycled tissue and compostable bag programme (operational sustainability).
Bangalore	Sustainability education and awareness sessions. Office green project (planting and indoor gardens). Waste reduction initiatives (recycling, waste sorting, and e-waste).
Manila	Sustainability education and awareness sessions focused on environmental conservation, including saving trees and protecting birds.
Hyderabad	Waste reduction initiatives (recycling, waste sorting, and e-waste). Seed ball making and office green project (planting and indoor gardens).
Ho Chi Minh City	Reforestation campaign with the GAIA Nature Conservation Center to support nature conservation and environmental protection in Vietnam.
Pune	Tree planting initiative to promote environmental sustainability.
New Delhi/ Gurgaon	Sustainability education and awareness sessions focused on reducing single-use plastics, encouraging recycling, and inspiring ecological responsibility through hands-on activities.

2026 Priorities (Environmental)

- Lock standard measurement menus per activity type (e.g., cleanup = kg waste; planting = #trees + survival rate; e-waste = kg).
- Add follow-up checks (e.g., tree survival after 6–12 months) to turn one-day events into measurable long-term outcomes.



PILLAR 3:
WELLNESS
IMPACT

Focus Areas

Wellness initiatives in 2025 focused on supporting the physical, emotional, and preventive health of TEC Members and employees. Across multiple centres, TEC Community hosted health screenings, medical consultations, mental health workshops, and wellness activities designed to make preventive care more accessible.

and healthcare organisations, ensuring participants received credible guidance and practical support.

By bringing wellness programmes directly into TEC centres, the initiatives encouraged Members to prioritise their health while also fostering open conversations around wellbeing.

These programmes were delivered in partnership with medical professionals, wellness practitioners,

2025 delivery at a glance



Activities
24



Participants
1,300



High-participation examples include Mumbai health screenings (315 participants) and Chennai multi-centre checkups and first-aid training (150 trained).

Illustrative Highlights

Shanghai – Workplace Wellbeing Talk: Building Mental Health Literacy

TEC Community Shanghai hosted a Workplace Wellbeing Talk focused on strengthening mental-health awareness and providing Members with practical tools for maintaining balance in a fast-paced professional environment. Delivered

by a guest expert, the session introduced evidence-based strategies for managing daily stress, improving focus, and building healthier work habits.

What made this activation especially impactful was the strong resonance among Members, many of whom continued the conversation by sharing reflections and personal takeaways. One Member even created a vlog documenting the session, amplifying its reach within the community and bringing authentic, peer-generated visibility to the topic. The partner organisation also highlighted the session on their own channels, further reinforcing TEC's commitment to workplace wellbeing.

The talk served as a valuable opener for ongoing wellness engagement in Shanghai, helping normalise conversations around mental health and encouraging Members to prioritise emotional



resilience as part of their professional and personal growth.

Dubai – Workplace Wellness Health Day with Enfield Royal Clinic

TEC Community Dubai hosted a wellness day in partnership with Enfield Royal Clinic, offering Members access to onsite health consultations and preventive screenings.

Participants were able to consult healthcare professionals and receive personalised guidance on maintaining their physical wellbeing. By bringing healthcare services directly into the workspace, the programme made it easier for Members to prioritise their health amid busy professional schedules.



Mumbai – Workplace Health Camp: Promoting Preventive Care & Wellbeing

TEC Community Mumbai organised a comprehensive health camp in collaboration with medical professionals and healthcare partners. The programme welcomed approximately 315 participants who received health screenings and consultations across multiple specialities.



Participants were able to access preventive health services, receive professional medical advice, and learn more about maintaining long-term wellbeing. The initiative helped make healthcare support more accessible while encouraging Members to take proactive steps towards their health.

Our Wellness Initiatives

City	Wellness Activity Areas
Mumbai	Comprehensive health camp (315 participants). Workshops on emotional resilience, stress reduction, and healthier mental habits, delivered through guided therapeutic sessions and practical tools.
Chennai	First-aid & fire-safety training, heart-health screenings
New Delhi & Gurgaon	1 to 1 therapy sessions, Pilates, mindfulness. Sessions supporting stress management, reduced mental fatigue, and improved clarity and productivity.
Shanghai	Workplace wellbeing lecture
Xi'an	Employee wellbeing education delivered through hospital-led health lectures, focusing on work-related health concerns.
Taipei	Guided meditation and yoga practices, community-building activities, and dedicated space for personal wellbeing reflection.
Dubai	Dermatology aftercare with continued clinical support beyond treatment.

What We Learned

Short, accessible sessions (15–60 minutes) drive strong attendance, while confidential one-on-one formats provide meaningful depth. Aligning wellness initiatives with seasonal themes keeps Members engaged and encourages repeat participation.

Year-on-Year Change – Wellness

Area	2024	2025
Pillar status	Embedded within “health & welfare”	Standalone pillar
Range of formats	Blood donation & screenings	Mental + Movement + Safety mix
Participation	900+	~1,300

2026 Priorities (Wellness)

- Establish a quarterly wellness rhythm combining screening, movement, and mental health activities.
- Implement standardised satisfaction metrics (1–5), alongside repeat attendance and referral-to-care indicators, to enable consistent reporting and actionable insights.



SIGNATURE CAMPAIGN — GIVE BACK WITH EVERY CUP (GBWEC)



Raised Over USD

10,000



Drinks Sold

>2,900

The Give Back With Every Cup (GBWEC) campaign continues to be one of TEC Community's most recognisable initiatives, turning everyday purchases into meaningful social impact.

Through GBWEC, Members contribute to charitable causes simply by purchasing selected drinks at TEC centres. The entire profit from each purchase is directed towards partner organisations supporting community development, environmental conservation, and social welfare programmes.

In 2025, the campaign raised **over USD 10,000**, with more than **2,900 drinks sold** across participating centres.

Beyond fundraising, GBWEC also helps increase awareness of local causes and encourages Members to engage with community initiatives in a simple and accessible way.

To recognise the cities whose collective generosity made the greatest impact, we highlight our top three contributing locations.

#1 Contributor – Seoul (USD 4,300)

TEC Community Seoul deepened its support for vulnerable youth with a donation and the launch of a **Discovery Day** initiative in early 2026. This immersive programme provides children from disadvantaged backgrounds — including orphans and those with limited financial resources — with hands-on exposure to a professional working environment.

Activities included English-language learning, interactive workshops, and age-appropriate sessions designed to broaden horizons, spark curiosity, and inspire future career and personal development. By offering this multi-phase experience, TEC Seoul aims to empower children with new skills, insights, and possibilities.



#2 Contributor – Taipei (USD 1,738)

Stray Animal Adoption Awareness with Something Studio

TEC Community Taipei delivered two Give Back With Every Cup initiatives in partnership with 三牲工作室 (Something Studio) and the Children’s Hearing Foundation, integrating social impact into the rhythm of everyday Member life.

Stray animal adoption awareness

Organised together with **Something Studio**, a photography-led activation gave visibility to stray dogs and cats awaiting adoption. Minimalist portraits were placed throughout the centre, transforming shared spaces into quiet moments of encounter and empathy. A scavenger-style experience, guided by clues and prompts linked to the 黑金寶藏奇航 charity drink menu, invited Members to engage playfully yet purposefully, while QR codes enabled immediate access to adoption pathways. Running from 19th May to 30th June 2025, the initiative drove strong participation, with assets later extended to shelters to support real-world outreach.

Support for children with hearing loss

Proceeds from the Give Back With Every Cup charity drink supported the **Children’s Hearing Foundation**, funding therapy, education, and family assistance for children with hearing loss—turning a simple purchase into tangible, sustained support.



#3 Contributor – Singapore (USD 1,179) TOUCH Community Services

TEC Community Singapore strengthened its commitment to accessible giving through a special edition of GBWEC in partnership with **TOUCH Community Services**, supporting elderly individuals, persons with disabilities, and low-income families.

A first-of-its-kind approach introduced direct online donations via TOUCH’s official giving portal, ensuring full transparency and enabling Members to benefit from Singapore’s **250% tax-deduction scheme**.

All funds raised supported eldercare programmes, disability services, Meals-on-Wheels deliveries, therapy initiatives, and caregiver assistance, ensuring essential services remained accessible to those who rely on them. GBWEC allowed TEC Singapore to seamlessly blend everyday workplace moments with meaningful social impact, reinforcing a culture of inclusive and transparent giving.






Our thanks to every city that participated in the 2025 Give Back With Every Cup campaign: Dubai, Hong Kong, Ho Chi Minh City, Manila, Seoul, Singapore, Taipei, Tokyo and Yokohama

We look forward to expanding this initiative into even more cities, creating further opportunities for TEC and our Members to come together in support of local communities in need.



TEC COMMUNITY
IMPACT AWARDS

City Champions by Pillar

Pillar	City Champion	Project	Impact
 Social	Bangalore	One Toy, One Smile – Sankalp	200 participants, 150 beneficiaries
 Environmental	Chennai	Beach Cleanup	50 participants, 120 kg waste removed
 Wellness	Mumbai	Health Camp – Hello Ayush	315 participants

** Cities were selected based on the cumulative impact of a single initiative within each pillar.*

Incredible Achievement – Mumbai



TEC **ORIGAMI**

Introducing Origami at TEC Mumbai

TEC Mumbai has partnered with Origami, India's leading eco-friendly hygiene paper brand, to bring fully recycled and compostable products into our centres. Made from 100% pre-consumer wastepaper, Origami avoids wood pulping, cuts energy and water use, and eliminates harmful chemicals — proving that sustainability and quality can go hand in hand.

Why Origami

- Lowest environmental impact
- No deforestation or agricultural resource use
- Certified excellence: ISO 22000, ISO 14001, ISO 9001, FSC, EPR, SMETA

Our Commitment

At The Executive Centre, we champion sustainability in every corner of our operations. By introducing Origami products, we reduce our footprint and invite our Members to join us

Our Impact (Aug-Dec 2025)

- 6,876 eco-friendly tissue products used
- 32 trees saved
- 5.18 tons of CO₂ emissions reduced
- 287 kg of plastic waste avoided

In creating a cleaner, greener, more responsible workplace. Together, we are shaping a sustainable future — one thoughtful choice at a time.

Why It's Exceptional

This initiative represents a structural, behaviour-shifting change across operations. By switching from virgin tissues to **100% recycled alternatives** (paired with compostable garbage bags) in washrooms, barista counters, and reception areas, TEC Mumbai reduces forest use, energy consumption, and plastic waste every single day.

Purpose & Rationale

- Minimise environmental impact by avoiding virgin pulp and lowering energy, water, and chemical intensity associated with conventional tissue production.
- Embed sustainability into daily operations rather than one-off campaigns.
- Position Mumbai as a model for operational decarbonisation within TEC's footprint.

Scope & Activities

- Switchover of all tissue points in common areas to recycled tissues.
- Adoption of compostable garbage bags to reduce plastic.
- Pilot and change management: communicated changes to Members, addressed initial feedback, achieved smooth adoption.

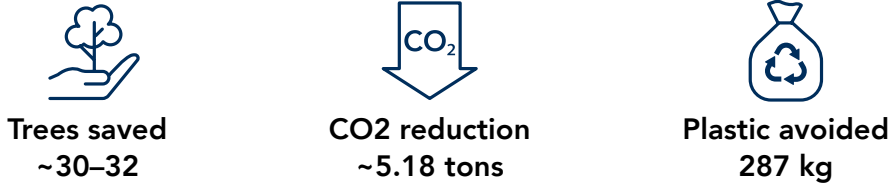
Sustainable Tissue Switch (Origami)

Pillar:
Environmental

Location:
Mumbai, India

Partner:
Origami Tissues

Impact & Metrics (from partner impact deck / survey)




Member involvement:



- Sustainable Tissue Initiative stage 1 – Origami: 250 participants (pilot)
- Sustainable Tissue Initiative stage 2 – Origami: 400 participants (wider rollout & presentation)
- Total Engagement: 650

City Leadership Award 2025 – Chennai

Chennai recorded the highest number of CSR activities (15), delivering strong outcomes across the Social, Environmental, and Wellbeing pillars, with examples included below.



Pillar	Focus Area	Activity	Key Outcomes	Partner
 Social Impact – Strengthening Community Health & Awareness	Health Education	COVID-19 Awareness Programme	140 participants, 120 beneficiaries; strengthened public-health literacy post-pandemic	SIIMS Hospital
	Community Support	Blood Donation	100+ Members participated and donated blood	Red Cross Society
	Community Support	Community Support & Donation Efforts	Ongoing local care; essential supplies to vulnerable groups	Multiple local community groups

Pillar	Focus Area	Activity	Key Outcomes	Partner
 Environmental Leadership – Measurable & Visible Impact	Clean-Up & Waste Reduction	Beach Clean-Up	50 participants; 120 kg of waste removed	Local environmental organisation
	Waste Reduction Education	Zero-waste & Upcycling Workshops	Promoted sustainable habits; hands-on behaviour-change	Local sustainability partners
	Awareness & Engagement	Earth Day Environmental Activation	Sustainability demos + awareness activities	In-centre sustainability partners
 Wellness Commitment – Empowering Health, Safety & Balance	Safety & Emergency Skills	First Aid & Fire Safety Training	150+ participants trained	Red Cross
	Preventive Health	Heart-Health Screening Programmes/ Vision Wellness Camp	150 participants; BP, cardiac risk & lifestyle assessments. The initiative benefited 70+ participants, improving awareness of eye health,	SIMS Hospital/ Parthasarathy Hospital
	Preventive Health	Posture & Productivity Masterclass	The masterclass benefited 30+ participants, increasing awareness of posture-related health risks	Sports2Science
	Mental & Physical Wellbeing	Mindfulness, Yoga & Sound-Healing Sessions	Improved mental balance; reduced stress; strengthened wellbeing culture	Blissful Yogashala/ Satvat Holistics



Certificates of Appreciation

In 2025, TEC Community was honoured with multiple Certificates of Appreciation from partner organisations across our markets, recognising the dedication, authenticity, and consistency of our CSR efforts. These certificates are more than formal acknowledgements — they reflect the trust, respect, and long-term relationships we have built with our community partners.

What These Certificates Represent

Beyond recognition, these certificates underscore TEC's commitment to genuine partnership, responsiveness to community needs, and alignment with each NGO's standards. They mark meaningful milestones in our ongoing journey to strengthen TEC's reputation as a trusted and responsible community partner across Asia.



PARTNERS WE WORKED WITH



TEC Community collaborated with **more than 50 non-profit organisations and social enterprises** across the Asia-Pacific region in 2025.

These partnerships enabled the delivery of a wide range of initiatives spanning healthcare, education, environmental conservation, and social welfare.

Social Impact Partners

These partners supported our donation drives, youth programmes, healthcare initiatives, and vulnerable community support across cities:

- **Angels for Children (Hong Kong)** – Supports underprivileged children through education, healthcare, and essential living needs via local and regional NGO partnerships.
- **Anima – Society for the Protection of Animals (Macau)** – Protects animal welfare through rescue, medical care, and advocacy against animal cruelty.
- **Arya Prasad / WorkWithArya (Mumbai)** – Provides counselling psychology services focused on emotional wellbeing and mental health awareness.
- **Blue Dragon Children’s Foundation (Ho Chi Minh City)** – Rescues children from trafficking and exploitation and supports recovery through education and long term care.
- **Cancer Council (Australia)** – Funds cancer research, prevention programs, and community support services for patients and families.
- **Cancer Patients Aid Association (Mumbai)** – Supports underprivileged cancer patients with treatment assistance, nutrition, and rehabilitation.
- **Caritas Manila (Manila)** – Delivers poverty alleviation programs including education, food security, and youth development.
- **Caritas Manila – Children’s Choir (Manila)** – Engages disadvantaged children in cultural and community building activities through music.
- **China Charity Federation (Beijing)** – Conducts national level humanitarian and social assistance programs for vulnerable communities.
- **Cradle of Hope Association (Macau)** – Provides care, shelter, and developmental support to abandoned and at risk children.
- **Dream Girl Foundation (Delhi/Gurgaon)** – Supports education, nutrition, and emotional wellbeing for underprivileged children.
- **Dr. R. N. Cooper Hospital (Mumbai)** – Government hospital providing accessible healthcare and community blood donation services.
- **Food From The Heart (Singapore)** – Alleviates food insecurity through large scale food distribution and children’s programmes.
- **Goonj (Multiple cities, India)** – Channels surplus urban materials into rural development, disaster relief, and dignity based community initiatives.
- **MH 14 Animal Hospital (Pune)** – Offers medical treatment, rescue, and rehabilitation for stray and abandoned animals.

- **Macau Blood Transfusion Centre (Macau)** – Government body ensuring safe blood supply for medical emergencies.
- **Muskurahat Foundation (Mumbai)** – Empowers underprivileged children through education, mental wellbeing, and life skills programmes.
- **NFBM Jagruti School for Blind Girls (Pune)** – Provides education and nutritional support to visually impaired girls.
- **Open Arms Korea (Seoul)** – Delivers education programmes and support to children from disadvantaged backgrounds.
- **PMI DKI Jakarta (Jakarta)** – Conducts blood donation drives and humanitarian health assistance across Jakarta.
- **Red Cross Society (Multiple cities)** – Provides humanitarian aid, blood donation services, disaster response, and health education.
- **Sivananda Rehabilitation Home for Leprosy (Hyderabad)** – Offers medical care, rehabilitation, and social reintegration for leprosy patients.
- **Smiling People (Seoul)** – Supports elderly individuals through home repair, clean up, and volunteer services.
- **Sankalp India Foundation (Bangalore / Hyderabad)** – Focuses on voluntary blood donation and care for children with blood disorders.
- **SHRI P. V. Narasimha Rao Memorial Charitable Trust (Hyderabad)** – Operates large scale blood donation and emergency blood access programmes.
- **渔书公益 / Yushu Charity (Tianjin)** – Promotes literacy by distributing books to children in under resourced communities.

Environmental Impact Partners

Supporting sustainability, reforestation, coastal protection, and environmental education:

- **Escrappy Recyclers (Bangalore / Hyderabad)** – Provides responsible e-waste collection and certified recycling services.
- **Gaia Nature Conservation Center (Vietnam)** – Restores forests and promotes biodiversity conservation through community engagement.
- **Greenpeace (New Delhi / Gurgaon)** – Advocates environmental protection through awareness, education, and sustainability initiatives.
- **Haribon Foundation Inc. (Manila)** – Protects biodiversity through tree planting, bird conservation, and environmental education.
- **Karvaan Foundation (Hyderabad)** – Restores drought prone regions through ecological projects and community participation.
- **Origami Tissues (Mumbai)** – Promotes sustainability by producing hygiene products from recycled paper.
- **Plant World (Pune)** – Supports urban greening and tree plantation initiatives.

- **Seerakku NGO (Chennai)** – Enables carbon reduction and ecosystem conservation through clean ups and environmental action.
- **WWF – World Wildlife Fund (New Delhi / Gurgaon)** – Works on wildlife conservation, climate action, and sustainability education.

Wellness Impact Partners

These organisations helped TEC extend accessible health and wellbeing support across cities.

- **All About Health (Mumbai)** – Provides nutrition, yoga, and lifestyle wellness programmes.
- **Blissful Yogashala (Chennai)** – Delivers yoga and mindfulness practices for holistic wellbeing.
- **Body Groomers (Chennai)** – Conducts Zumba and fitness based wellness sessions.
- **Cult Fit (Mumbai)** – Offers group fitness, movement, and wellness experiences.
- **Enfield Royal Clinic (Dubai)** – Provides preventive health screenings and workplace medical consultations.
- **GMCKS Pranic Healing Centre (Chennai)** – Supports mental and emotional balance through pranic healing practices.
- **Hridaay (New Delhi / Gurgaon)** – Facilitates mental wellbeing workshops and one to one therapeutic sessions.
- **King's College London (Shanghai – guest lecture)** – Delivers workplace mental health awareness and education sessions.
- **Ness – Wellness Alliance (Taipei)** – Brings together wellness experts to promote holistic health practices.
- **Parthasarathy Hospital (Chennai)** – Provides eye care screening and vision health programs.
- **Prashanth Hospitals (Chennai)** – Conducts preventive health check ups and medical camps.
- **Satvat Holistic (Chennai)** – Delivers sound healing and stress relief wellness sessions.
- **SIIMS Hospital (Chennai)** – Provides health awareness programs and preventive care education.
- **Sports2Science (Chennai)** – Applies movement science and ergonomics to improve posture and productivity.

Signature Campaign Partner – GBWEC

The **Give Back With Every Cup (GBWEC)** campaign partnered with regional NGOs to transform everyday Member engagement into meaningful social impact:

- **Children’s Hearing Foundation (Taipei)** – Supports children with hearing loss through therapy, education, and family assistance.
- **Haribon Foundation Inc. (Manila)** – Receives fundraising support for tree planting and biodiversity conservation.
- **Noor Dubai Foundation (Dubai)** – Prevents and treats avoidable blindness through eye care programmes.
- **Open Arms Korea (Seoul)** – Supports education for children from disadvantaged communities.
- **Operation Smile (Ho Chi Minh City)** – Provides free, life changing surgeries for children with cleft conditions.
- **Something Studio (Taipei)** – Promotes stray animal adoption through photography, storytelling, and community engagement.
- **TOUCH Community Services (Singapore)** – Supports elderly care, disability services, and family support programmes.



CONCLUSION

In 2025, TEC Community demonstrated the power of purpose, people, and collective action. Across 11 countries and 29 cities, Members and teammates delivered 90 initiatives that strengthened communities, supported vulnerable groups, restored environments, and fostered wellbeing within and beyond our centres.

These achievements reflect not only growth in scale and participation, but also our evolution toward more measurable, sustainable, and long-term impact.

Looking ahead, TEC Community will deepen its influence through stronger measurement frameworks, scalable programmes, and continued investment in education, sustainability, and wellbeing – empowering Members and teammates to play an active role in shaping the communities around them.

